

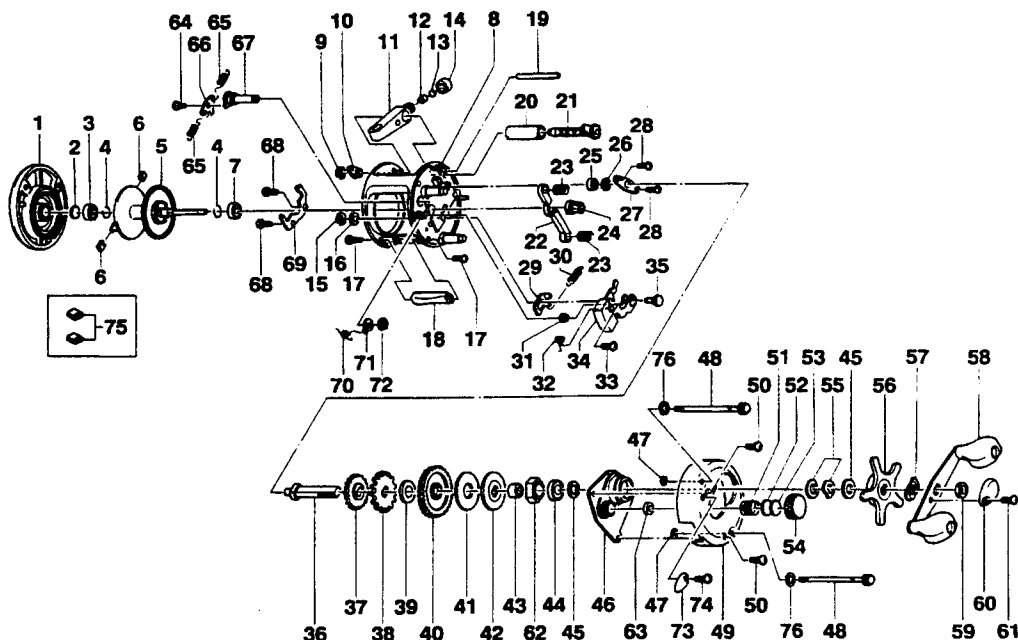
BROWNING MIDAS 6W

SPECIFICATIONS:

- 6 Bearings
- 5.2:1 Gear Ratio
- 9.5 oz. Weight
- 180 yds./14 lb. Line Capacity

FEATURES:

- 1 piece die cast aluminum frame
- Thumb Button Spool Release
- Extra-wide, high-strength Gear System
- Machined Aluminum Spool
- Aluminum Side Covers
- Double Sealed stainless steel ball bearings
- Centrifugal Brake System



Key No.	Part No.	Description	Price	Key No.	Part No.	Description	Price
1	XX323-05	Left Side Cover Assy	19.21	39	JX111-01	Washer - Ratchet	.52
2	XX038-02	Spool Shaft Washer	.21	40	JX012-01	Drive Gear	8.76
3	JX106-01	Bearing - Spool Shaft	6.39	41	JX059-01	Drag Disc	.21
4	XX080-01	Clip Ring	.26	42	JX045-01	Drag "D" Washer	.98
5	XX321-02	Spool Assy	21.63	43	CW052-01	Sleeve - One Way Bearing	3.00
6	XX044-01	Brake Shoe B	.21	44	TW058-01	Bearing - Crank Shaft (U)	6.13
7	JX106-01	Bearing - Spool Shaft	6.39	45	JX038-01	Crank Shaft Washer	.31
8	XX301-02	Frame Assy	38.06	46	JX066-02	Crank Shaft Guide	3.35
9	QW120-01	E-Clip - Worm Shaft	.15	47	JX073-01	O-Ring - Thumb Screw	.31
10	JX067-01	Bushing - Worm Shaft	.31	48	XX374-01	Thumb Screw Assy	2.63
11	JX347-02	Line Guide Carrier Assy	2.32	49	XX024-05	Right Side Cover	10.30
12	JX006-01	Line Guide Pawl	1.80	50	QW123-05	Right Side Cover Screw	.62
13	JX035-01	Washer - Line Guide Pawl	.21	51	JX105-01	Spring - Tension Knob	.36
14	JX007-02	Screw - Line Guide Carrier	.52	52	QW032-02	Washer - Spool Tension	.26
15	NX092-01	E-Clip - Kick Lever Guide Post	.15	53	JX082-01	Washer - Cushion	.21
16	XX035-01	Washer - Kick Lever Guide	.98	54	XX033-01	Spool Tension Knob	2.82
17	JX050-01	Screw - Thumb Rest	.36	55	JX046-01	Spring "D" Washer	.77
18	XX009-02	Thumb Rest	.62	56	XX355-02	Star Drag Assy	3.45
19	XX061-01	Line Guide Carrier Guide	3.24	57	NX054-01	Handle Washer	.15
20	XX016-01	Worm Shaft Guide	1.08	58	JX318-02	Handle Assy	11.64
21	XX372-01	Worm Shaft Assy	8.45	59	QW003-01	Handle Nut	.46
22	JX025-01	Pinion Yoke	.62	60	QW034-03	Handle Nut Cap	1.08
23	JX040-01	Yoke Spring	.15	61	QW123-05	Handle Nut Cap Screw	.62
24	JX011-01	Pinion Gear	6.13	62	UQ063-02	One Way Bearing	7.52
25	XX017-01	Bearing - Crank Shaft (L)	5.05	63	XX117-01	Bearing - Tension Knob	5.41
26	QW120-01	E-Clip - Crank Shaft	.15	64	XX125-01	Screw - Clicker Pawl	.98
27	JX002-01	Retainer - Crank Shaft	.62	65	JX110-01	Clicker Spring	.26
28	JX107-01	Screw - Crank Shaft Retainer	.15	66	JX114-01	Clicker Pawl	.67
29	JX077-01	Kick Lever	.62	67	JX084-01	Clicker Cam	2.88
30	JX097-01	Spring - Kick Lever	.21	68	JX125-01	Screw - Clicker Spring Holder	.26
31	JX068-01	Bushing - Release Slider Guide	1.24	69	JX103-01	Clicker Spring Holder	1.18
32	JX104-01	Spring - Release Slider	.21	70	JX022-01	Spring - Clicker Cam	.26
33	XX050-01	Screw - Release Slider	.15	71	JX041-01	Click Cam Actuator	.36
34	JX339-02	Release Slider Assy	1.80	72	JX075-01	C-Clip	.26
35	JX102-01	Post - Kick Lever Guide	.98	73	JX109-02	Click Lever	.52
36	JX008-01	Crank Shaft	3.30	74	QW053-27	Screw - Click Lever	.57
37	JX112-01	O/S Drive Gear	.72	76	JX121-01	Washer - Thumb Screw	.26
38	JX083-01	Trip Ratchet	1.03				

MODEL INTRODUCED	EFFECTIVE DATE OF PARTS LIST/DIAGRAM	Oct. 1996	DISCONTINUED	N/A
-------------------------	---	-----------	---------------------	-----

Prices subject to change without notice. Prices do not include postage and handling.

PLEASE ORDER BY PART NUMBER Zebco Division, Brunswick Corporation, Box 270, Tulsa, OK 74101 USA 918-831-6965

